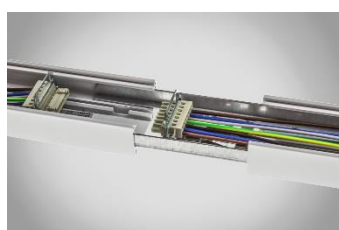
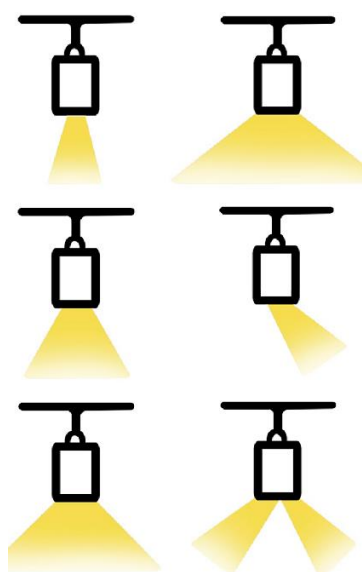


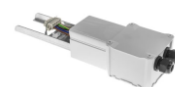


	40 Watt	73,5 Watt
Measurements:	1425x70x80mm	1425x70x80mm
Mounting:	Suspended (with optional bracket)	Suspended (with optional bracket)
LED chip:	Samsung LM561	Samsung LM561
Driver:	Tridonic	Tridonic
Beam angle:	30°/60°/90° (optic) - 120° (opal) asymmetric/double asymmetric	30°/60°/90° (optic) - 120° (opal) asymmetric/double asymmetric
Dimmable:	On request: 1-10V/Dali	On request: 1-10V/Dali
Emergency unit:	On request	On request
Colour rendering (Ra):	≥ 80	≥ 80
Lumen output:	ca. 6000lm	ca. 11.025lm
Lm/W	ca. 150lm/W	ca. 150lm/W
Colour temperature:	3000/4000/5000K	3000/4000/5000K
Power Factor:	> 0.96	> 0.96
Housing:	White (RAL9016) coated aluminium	White (RAL9016) coated aluminium
Weight:	ca. 4,9 kg	ca. 4,9 kg
Working range:	-20°C+50°C	-20°C+50°C
Input voltage:	AC 220-240V 50-60Hz	AC 220-240V 50-60Hz
Lifespan:	135.000 hours L70 B10 (ta 25°) 93.000 hours L70 B10 (ta 50°)	135.000 hours L70 B10 (ta 25°) 93.000 hours L70 B10 (ta 50°)
Warranty:	5 years	5 years
Protection class:	IP52 - IK10	IP52 - IK10
Certification:	CE	CE



Produced in the Netherlands

End feed



Blanking cover



End cap



Brackets (1 per unit)



DOUBLE LUX LIGHTING B.V.

Nijverheidsweg 2, 9902 AE Appingedam, Nederland

T +31 (0) 596 620075 **F** +31 (0) 596 626760 **E** info@doublelux.com **W** www.doublelux.com